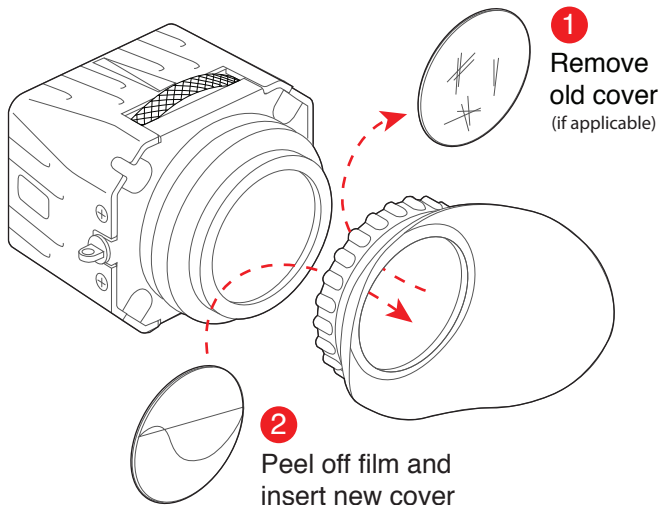




Installing your Anti-Fog Cover



Precautions

The anti-fog protective covers naturally have a tackier surface than standard lenses and thus need to be cleaned differently. Do not wipe anti-fog protective cover with a dry lens cloth or tissue. Use a micro fiber lens cloth or Kim Wipe type tissue and soak with water. Wipe the cover then let air dry.

